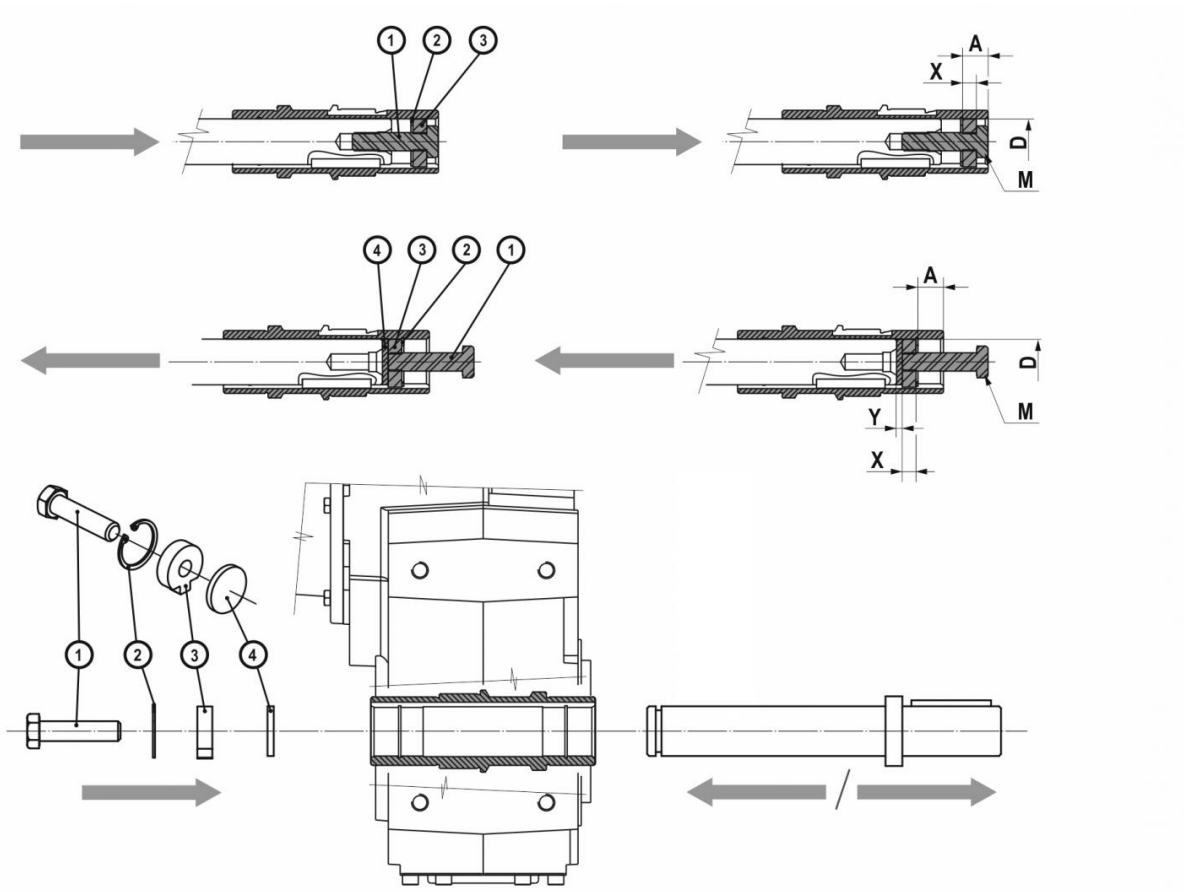


Mounting/dismounting kit for hollow shaft gear reducers with keyway that includes:

- 1. Retaining bolt
- 2. Circlip
- 3. Fixed nut
- 4. Forcing washer



	D	A	X	Y	M
S052/S053	30	13,8	10	5	M10x35
S062/S063	35	12	12	5	M16x50
S082/S083	40	22,25	12	5	M16x50
	45				
S102/S103	50	25	12	5	M16x50
S122/S123	60	28	16	5	M20x70